



# BEACON FEN ENERGY PARK

Planning Inspectorate Reference: EN010151

Appendix 11.3 Summary of Watercourse Crossings and Photographs

Document Reference: 6.3 ES Volume 2, 6.3.83

April 2025



## Quality information

Prepared by	Checked by	Verified by	Approved by
BO	RG	SR	AS

### Disclaimer

This report has been prepared by Wardell Armstrong LLP with all reasonable skill, care and diligence, within the terms of the Contract with the Client. The report is confidential to the Client and Wardell Armstrong LLP accepts no responsibility of whatever nature to third parties to whom this report may be made known. No part of this document may be reproduced without the prior written approval of Wardell Armstrong LLP.

## Table of Contents

1.	INTRODUCTION .....	1
----	--------------------	---

## Tables

Table 1.1 – Summary of Watercourse Crossings and Photographs .....	2
--	---

# 1. INTRODUCTION

## 1.1 Introduction

- 1.1.1 Appendix 11.3: Summary of Watercourse Crossings and Photographs has been prepared by Wardell Armstrong LLP (part of SLR) ('WA') on behalf of Beacon Fen Energy Park Ltd (the 'Applicant') in support of an application for a Development Consent Order (DCO) for Beacon Fen Energy Park (the 'Proposed Development').
- 1.1.2 Table 1.1 presents the summary of watercourse crossings and photographs.



**Table 1.1 – Summary of Watercourse Crossings and Photographs**

<b>WATERCOURSE CROSSING ID*</b>	<b>PROPOSED CROSSING TYPE</b>	<b>METHOD OF PROPOSED CROSSING TYPE</b>	<b>PROPOSED DEVELOPMENT ELEMENT</b>	<b>WATER AUTHORITY</b>	<b>WATERCOURSE CLASSIFICATION</b>	<b>INDICATIVE NGR*</b>	<b>PHOTOGRAPH SHEET NO.:</b>
WX1	Vehicular Track	New Culvert	Bespoke Access Road	Black Sluice Internal Drainage Board	Ordinary Watercourse	TF 11156 45185	01***
WX2	Vehicular Track	New Culvert	Bespoke Access Road	Black Sluice Internal Drainage Board	Ordinary Watercourse	TF 11280 45344	02***
WX3	Vehicular Track	New Culvert	Bespoke Access Road	Black Sluice Internal Drainage Board	Ordinary Watercourse	TF 11385 45551	03***
WX4	Vehicular Track	Upgrade to Culvert	Bespoke Access Road	Lincolnshire County Council	Ordinary Watercourse	TF 11452 45676	04***
WX5	Vehicular Track	New Culvert	Bespoke Access Road	Lincolnshire County Council	Ordinary Watercourse	TF 11533 45649	05***
WX6	Vehicular Track	New Culvert	Bespoke Access Road	Lincolnshire County Council	Ordinary Watercourse	TF 11828 45964	06***
WX7	Vehicular Track	New Culvert	Bespoke Access Road	Lincolnshire County Council	Ordinary Watercourse	TF 12045 46148	07***
WX8	Vehicular Track	New Culvert	Bespoke Access Road	Lincolnshire County Council	Ordinary Watercourse	TF 12052 46148	08***
WX9	Vehicular Track	New Culvert	Bespoke Access Road	Lincolnshire County Council	Ordinary Watercourse	TF 12632 46729	09***
WX10	Vehicular Track	New Culvert	Bespoke Access Road	Lincolnshire County Council	Ordinary Watercourse	TF 12679 46765	10***
WX11	Vehicular Track	New Culvert	Bespoke Access Road	Lincolnshire County Council	Ordinary Watercourse	TF 12690 46734	11***
WX12	Vehicular Track	New Culvert	Bespoke Access Road	Lincolnshire County Council	Ordinary Watercourse	TF 13121 47001	12***
WX13**	Pedestrian Track - Footbridge	New Bridge	Solar Array Area	Lincolnshire County Council	Ordinary Watercourse	TF 13393 47291	13***
WX14	Vehicular Track	New Culvert	Solar Array Area	Lincolnshire County Council	Ordinary Watercourse	TF 13400 47043	14***
WX15**	Pedestrian Track - Footbridge	New Bridge	Solar Array Area	Lincolnshire County Council	Ordinary Watercourse	TF 13411 47043	15***
WX16**	Pedestrian Track - Footbridge	New Bridge	Solar Array Area	Lincolnshire County Council	Ordinary Watercourse	TF 13411 47043	16***
WX17	Pedestrian Track - Footbridge	New Bridge	Solar Array Area	Environment Agency	Main River	TF 15329 49752	17***
WX18	Vehicular Track	Upgrade to Culvert	Solar Array Area	Black Sluice Internal Drainage Board	Ordinary Watercourse	TF 14065 48857	18***
WX19	Vehicular Track	Upgrade to Culvert	Solar Array Area	Black Sluice Internal Drainage Board	Ordinary Watercourse	TF 15218 48969	19•
WX20	Vehicular Track	Upgrade to Culvert	Solar Array Area	Black Sluice Internal Drainage Board	Ordinary Watercourse	TF 15408 49574	20•
WX21	Vehicular Track	New Culvert	Solar Array Area	Black Sluice Internal Drainage Board	Ordinary Watercourse	TF 13793 48313	21 <sup>0</sup>
WX22	Vehicular Track	New Culvert	Solar Array Area	Black Sluice Internal Drainage Board	Ordinary Watercourse	TF 14481 48557	22 <sup>0</sup>

WATERCOURSE CROSSING ID*	PROPOSED CROSSING TYPE	METHOD OF PROPOSED CROSSING TYPE	PROPOSED DEVELOPMENT ELEMENT	WATER AUTHORITY	WATERCOURSE CLASSIFICATION	INDICATIVE NGR*	PHOTOGRAPH SHEET NO.:
WX23	Vehicular Track	New Culvert	Solar Array Area	Black Sluice Internal Drainage Board	Ordinary Watercourse	TF 14481 48557	23 <sup>Ø</sup>
WX24	Vehicular Track	New Culvert	Solar Array Area	Black Sluice Internal Drainage Board	Ordinary Watercourse	TF 13989 48009	24 <sup>•</sup>
WX25	Vehicular Track	New Culvert	Solar Array Area	Black Sluice Internal Drainage Board	Ordinary Watercourse	TF 14729 48250	25 <sup>***</sup>
WX26	Vehicular Track	Upgrade to Culvert	Solar Array Area	Black Sluice Internal Drainage Board	Ordinary Watercourse	TF 15704 48911	26 <sup>•</sup>
WX27	Vehicular Track	New Culvert	Solar Array Area	Black Sluice Internal Drainage Board	Ordinary Watercourse	TF 15147 48129	27 <sup>***</sup>
WX28	Vehicular Track	New Culvert	Solar Array Area	Black Sluice Internal Drainage Board	Ordinary Watercourse	TF 14762 47880	28 <sup>***</sup>
WX29	Vehicular Track	New Culvert	Solar Array Area	Black Sluice Internal Drainage Board	Ordinary Watercourse	TF 14438 47630	29 <sup>•</sup>
WX30	Vehicular Track	Upgrade to Culvert	Solar Array Area	Black Sluice Internal Drainage Board	Ordinary Watercourse	TF 14294 47454	30 <sup>Ø</sup>
WX31	Vehicular Track	New Culvert	Solar Array Area	Black Sluice Internal Drainage Board	Ordinary Watercourse	TF 14294 47454	31 <sup>Ø</sup>
WX32	Vehicular Track	New Culvert	Solar Array Area	Black Sluice Internal Drainage Board	Ordinary Watercourse	TF 14267 47521	32 <sup>Ø</sup>
WX33	Vehicular Track	New Culvert	Solar Array Area	Black Sluice Internal Drainage Board	Ordinary Watercourse	TF 13808 47438	33 <sup>***</sup>
WX34	Vehicular Track	New Culvert	Solar Array Area	Lincolnshire County Council	Ordinary Watercourse	TF 13906 47239	34 <sup>Ø</sup>
WX35**	Vehicular Track	New Bridge	Solar Array Area	Lincolnshire County Council	Ordinary Watercourse	TF 13888 47177	35 <sup>Ø</sup>
WX36**	Pedestrian Track - Footbridge	New Bridge	Solar Array Area	Black Sluice Internal Drainage Board	Ordinary Watercourse	TF 13945 47055	36 <sup>***</sup>
WX37**	Vehicular Track	New Bridge	Solar Array Area	Black Sluice Internal Drainage Board	Ordinary Watercourse	TF 13945 47055	36 <sup>***</sup>
WX38**	Pedestrian Track - Footbridge	New Bridge	Solar Array Area	Environment Agency	Main River	TF 14364 47311	37 <sup>***</sup>
WX39**	Pedestrian Track - Footbridge	New Bridge	Solar Array Area	Environment Agency	Main River	TF 14554 47441	38 <sup>***</sup>
WX40	Cable	Horizontal Directional Drilling	Solar Array Area	Environment Agency	Main River	TF 14728 47527	39 <sup>***</sup>
WX41**	Pedestrian Track - Footbridge	New Bridge	Solar Array Area	Environment Agency	Main River	TF 15382 47989	40 <sup>Ø</sup>
WX42	Vehicular Track	New Culvert	Solar Array Area	Lincolnshire County Council	Ordinary Watercourse	TF 13827 46648	41 <sup>***</sup>
WX43	Vehicular Track	New Culvert	Solar Array Area	Black Sluice Internal Drainage Board	Ordinary Watercourse	TF 14317 47190	42 <sup>Ø</sup>
WX44	Vehicular Track	New Culvert	Solar Array Area	Lincolnshire County Council	Ordinary Watercourse	TF 15251 47562	43 <sup>***</sup>
WX45	Vehicular Track	New Culvert	Solar Array Area	Lincolnshire County Council	Ordinary Watercourse	TF 15525 48004	44 <sup>•</sup>

WATERCOURSE CROSSING ID*	PROPOSED CROSSING TYPE	METHOD OF PROPOSED CROSSING TYPE	PROPOSED DEVELOPMENT ELEMENT	WATER AUTHORITY	WATERCOURSE CLASSIFICATION	INDICATIVE NGR <sup>†</sup>	PHOTOGRAPH SHEET NO.:
WX46	Cable	Horizontal Directional Drilling	Solar Array Area	Lincolnshire County Council	Ordinary Watercourse	TF 15015 46992	45 <sup>•</sup>
WX47	Cable	Trenched or Trenchless Technique	Solar Array Area	Black Sluice Internal Drainage Board	Ordinary Watercourse	TF 15022 46977	46 <sup>•</sup>
WX48	Cable	Trenched or Trenchless Technique	Cable Route Corridor	Black Sluice Internal Drainage Board	Ordinary Watercourse	TF 15425 46490	47 <sup>•</sup>
WX49	Cable	Horizontal Directional Drilling	Cable Route Corridor	Environment Agency	Main River	TF 15722 46090	Not Accessible
WX50	Cable	Trenched or Trenchless Technique	Cable Route Corridor	Black Sluice Internal Drainage Board	Ordinary Watercourse	TF 15975 45286	48 <sup>•</sup>
WX51	Cable	Trenched or Trenchless Technique	Cable Route Corridor	Black Sluice Internal Drainage Board	Ordinary Watercourse	TF 15978 45266	49 <sup>Ø</sup>
WX52	Cable	Trenched or Trenchless Technique	Cable Route Corridor	Black Sluice Internal Drainage Board	Ordinary Watercourse	TF 16051 44943	50 <sup>•</sup>
WX53	Cable	Trenched or Trenchless Technique	Cable Route Corridor	Black Sluice Internal Drainage Board	Ordinary Watercourse	TF 16189 44770	51 <sup>•</sup>
WX54	Cable	Trenched or Trenchless Technique	Cable Route Corridor	Black Sluice Internal Drainage Board	Ordinary Watercourse	TF 16442 44783	52 <sup>***</sup>
WX55	Cable	Trenched or Trenchless Technique	Cable Route Corridor	Black Sluice Internal Drainage Board	Ordinary Watercourse	TF 16736 44634	53 <sup>•</sup>
WX56	Cable	Trenched or Trenchless Technique	Cable Route Corridor	Black Sluice Internal Drainage Board	Ordinary Watercourse	TF 16798 44032	54 <sup>***</sup>
WX57	Cable	Trenched or Trenchless Technique	Cable Route Corridor	Black Sluice Internal Drainage Board	Ordinary Watercourse	TF 16865 43999	55 <sup>***</sup>
WX58	Cable	Trenched or Trenchless Technique	Cable Route Corridor	Black Sluice Internal Drainage Board	Ordinary Watercourse	TF 16720 43221	56 <sup>•</sup>
WX59	Cable	Trenched or Trenchless Technique	Cable Route Corridor	Black Sluice Internal Drainage Board	Ordinary Watercourse	TF 16728 43195	57 <sup>•</sup>
WX60	Cable	Trenched or Trenchless Technique	Cable Route Corridor	Black Sluice Internal Drainage Board	Ordinary Watercourse	TF 16870 42888	58 <sup>***</sup>
WX61	Cable	Trenched or Trenchless Technique	Cable Route Corridor	Black Sluice Internal Drainage Board	Ordinary Watercourse	TF 17103 42850	59 <sup>***</sup>
WX62	Cable	Trenched or Trenchless Technique	Cable Route Corridor	Black Sluice Internal Drainage Board	Ordinary Watercourse	TF 18234 42499	60 <sup>***</sup>
WX63	Cable	Trenched or Trenchless Technique	Cable Route Corridor	Black Sluice Internal Drainage Board	Ordinary Watercourse	TF 18811 42390	61 <sup>•</sup>
WX64	Cable	Trenched or Trenchless Technique	Cable Route Corridor	Black Sluice Internal Drainage Board	Ordinary Watercourse	TF 19449 42105	62 <sup>***</sup>
WX65	Cable	Trenched or Trenchless Technique	Cable Route Corridor	Black Sluice Internal Drainage Board	Ordinary Watercourse	TF 19634 41927	63 <sup>***</sup>
WX66	Cable	Horizontal Directional Drilling	Cable Route Corridor	Environment Agency	Main River	TF 19827 41738	64 <sup>***</sup>
WX67	Cable	Trenched or Trenchless Technique	Cable Route Corridor	Black Sluice Internal Drainage Board	Ordinary Watercourse	TF 20359 40736	65 <sup>***</sup>
WX68	Cable	Trenched or Trenchless Technique	Cable Route Corridor	Black Sluice Internal Drainage Board	Ordinary Watercourse	TF 20528 40395	66 <sup>***</sup>

WATERCOURSE CROSSING ID*	PROPOSED CROSSING TYPE	METHOD OF PROPOSED CROSSING TYPE	PROPOSED DEVELOPMENT ELEMENT	WATER AUTHORITY	WATERCOURSE CLASSIFICATION	INDICATIVE NGR <sup>†</sup>	PHOTOGRAPH SHEET NO.:
WX69	Cable	Trenched or Trenchless Technique	Cable Route Corridor	Black Sluice Internal Drainage Board	Ordinary Watercourse	TF 20537 39774	67 <sup>•</sup>
WX70	Cable	Trenched or Trenchless Technique	Cable Route Corridor	Black Sluice Internal Drainage Board	Ordinary Watercourse	TF 20364 39432	68 <sup>•</sup>
WX71	Cable	Trenched or Trenchless Technique	Cable Route Corridor	Black Sluice Internal Drainage Board	Ordinary Watercourse	TF 20178 39059	69 <sup>•</sup>
WX72	Cable	Trenched or Trenchless Technique	Cable Route Corridor	Black Sluice Internal Drainage Board	Ordinary Watercourse	TF 20170 38941	70 <sup>***</sup>
WX73	Cable	Trenched or Trenchless Technique	Cable Route Corridor	Black Sluice Internal Drainage Board	Ordinary Watercourse	TF 20163 38922	71 <sup>***</sup>
WX74	Cable	Trenched or Trenchless Technique	Cable Route Corridor	Black Sluice Internal Drainage Board	Ordinary Watercourse	TF 20063 38834	72 <sup>***</sup>
WX75	Cable	Trenched or Trenchless Technique	Cable Route Corridor	Black Sluice Internal Drainage Board	Ordinary Watercourse	TF 19876 38586	73 <sup>***</sup>
WX76	Cable	Trenched or Trenchless Technique	Cable Route Corridor	Black Sluice Internal Drainage Board	Ordinary Watercourse	TF 19826 38469	74 <sup>***</sup>
WX77	Cable	Trenched or Trenchless Technique	Cable Route Corridor	Black Sluice Internal Drainage Board	Ordinary Watercourse	TF 19786 38366	75 <sup>***</sup>
WX78	Cable	Trenched or Trenchless Technique	Cable Route Corridor	Black Sluice Internal Drainage Board	Ordinary Watercourse	TF 19754 38340	76 <sup>***</sup>
WX79	Cable	Trenched or Trenchless Technique	Cable Route Corridor	Black Sluice Internal Drainage Board	Ordinary Watercourse	TF 19740 38340	77 <sup>***</sup>

**Note**

NGR = National Grid Reference

\*Figure 11.6 shows location of watercourse crossings

\*\* The provision of footpaths (i.e., new footbridge crossings) across the Solar Array Area is subject to detail design.

\*\*\* Photograph taken on Samsung SM-G990B2 5 mm lens

• Photograph taken on Google Pixel 4a 4mm lens

∅ Unknown camera specifications

† All proposed watercourse crossing locations are indicative and subject to detailed design. The proposed watercourse crossings are to be possibly microsituated but limited to the same watercourse and within the DCO Order Limits.





Upstream Viewpoint



Downstream Viewpoint

Photograph Sheet: 01  
NGR: TF 11156 45185  
Photograph Date: 3 December 2024

Description: Location of WX01. Unnamed drain, with overgrown vegetation throughout bank, left bank; with overgrown vegetation throughout bank, looking downstream left bank c.0.4m, right bank c.0.8m, width c.0.9m, water depth c.0.0m



Upstream Viewpoint



Downstream Viewpoint

Photograph Sheet: 02  
NGR: TF 11280 45344  
Photograph Date: 3 December 2024

Description: Location of WX02. Unnamed drain, slightly overgrown looking downstream, left bank c.1.2m, right bank c.1.2m, width c.2.0m, water depth c.0.4m.





Upstream Viewpoint



Downstream Viewpoint

Photograph Sheet: 03  
NGR: TF 11385 45551  
Photograph Date: 3 December 2024

Description: Location of WX03. Unnamed drain, with overgrown vegetation throughout channel, left bank c.1.2m, right bank c.1.5m, width c.2.5m, Water depth c.0.1m. Facing upstream.



Upstream Viewpoint



Downstream Viewpoint

Photograph Sheet: 04  
NGR: TF 11452 45676  
Photograph Date: 3 December 2023

Description: Location of WX04. Unnamed drain, with a hedge and overgrown vegetation throughout channel, left bank c.0.8m, right bank c.0.5m, width c.1.5m, Water depth c.0.0m. Facing upstream.





Upstream Viewpoint



Downstream Viewpoint

Photograph Sheet: 05  
NGR: TF 11533 45649  
Photograph Date: 3 December 2024

Description: Location of WX05. Unnamed drain, with a hedge and overgrown vegetation throughout channel, left bank c.0.01m, right bank c.0.01m, width c.0.1m, Water depth c.0.0m. Facing Upstream.



Upstream Viewpoint



Downstream Viewpoint

Photograph Sheet: 06  
NGR: TF 11828 45964  
Photograph Date: 3 December 2024

Description: Location of WX06. Unnamed drain, with a hedge and overgrown vegetation throughout channel, left bank c.0.01m, right bank c.0.01m, width c.0.5m, Water depth c.0.0m. Facing east.





Upstream Viewpoint



Downstream Viewpoint

Photograph Sheet:

07

NGR:

TF 12045 46148

Photograph Date:

3 December 2024

Description:

Location of WX07. Unnamed drain, with overgrown vegetation throughout channel, left bank c.1.0m, right bank c.1.0m, width c.1.2m, Water depth c.0.0m. Facing Upstream.



Upstream Viewpoint



Downstream Viewpoint

Photograph Sheet:

08

NGR:

TF 12052 46148

Photograph Date:

3 December 2024

Description:

Location of WX08. Unnamed drain, with overgrown vegetation throughout channel, left bank c.0.8m, right bank c.0.5m, width c.0.9m, water depth c.0.0m no visible flow.





Upstream Viewpoint



Downstream Viewpoint

**Photograph Sheet:** 09  
**NGR:** TF 12632 46729  
**Photograph Date:** 3 December 2024

**Description:** Location of WX09. No drain present, overgrown vegetation. Drain present to the east of watercourse crossing location



Upstream Viewpoint



Downstream Viewpoint

**Photograph Sheet:** 10  
**NGR:** TF 12679 46765  
**Photograph Date:** 3 December 2024

**Description:** Location of WX11. Unnamed drain, with vegetation throughout channel, left bank c.1.3m, right bank c.1.3m, width c1.5m. Water depth is c.0.02m in the channel. No culvert present through concrete area to WX11.





Upstream Viewpoint



Downstream Viewpoint

**Photograph Sheet:** 11  
**NGR:** TF 12690 46734  
**Photograph Date:** 3 December 2024  
**Description:** Location of WX11. Unnamed drain, with vegetation throughout channel, left bank c.1.3m, right bank c.1.3m, width c1.5m. Water depth is c.0.02m in the channel.



Upstream Viewpoint



Downstream Viewpoint

**Photograph Sheet:** 12  
**NGR:** TF 13121 47001  
**Photograph Date:** 3 December 2024  
**Description:** Location of WX12. Unnamed drain, with vegetation throughout channel, left bank c.1.0m, right bank c.1.0m, width c2.4m. Water depth is c.0.05m in the channel.





Upstream Viewpoint



Downstream Viewpoint

**Photograph Sheet:** 13  
**NGR:** TF 13393 47291  
**Photograph Date:** 3 December 2024  
**Description:** Location of WX13. Unnamed drain, with vegetation throughout channel, left bank c.1.4m, right bank c.1.4m, width c2.0m. Water depth is c.0.05m in the channel.



Upstream Viewpoint



Downstream Viewpoint

**Photograph Sheet:** 14  
**NGR:** TF 13400 47043  
**Photograph Date:** 3 December 2024  
**Description:** Location of WX14. Unnamed drain, with vegetation throughout channel, left bank c.1.5m, right bank c.1.5m, width c2.0m. Water depth is c.0.05m in the channel and culverted across road.





Upstream Viewpoint



Downstream Viewpoint

Photograph Sheet: 15  
NGR: TF 13411 47043  
Photograph Date: 3 December 2024

Description: Location of WX15. Unnamed drain, with overgrown vegetation throughout channel, left bank c.1.2m, right bank c.1.2m, width c.2.5m. Water depth is c.0.5m in the channel and culverted across road.



Upstream Viewpoint



Downstream Viewpoint

Photograph Sheet: 16  
NGR: TF 13411 47043  
Photograph Date: 3 December 2024

Description: Location of WX16. Unnamed drain, with banks comprised of earth material, left bank c.2.0m, right bank c.2.0m, width c.2.0m. Water depth is c.0.05m in the channel and culverted across road.





Upstream Viewpoint



Downstream Viewpoint

**Photograph Sheet:** 17  
**NGR:** TF 15329 49752  
**Photograph Date:** 3 December 2024

**Description:** Location of WX17. Unnamed drain, with hedge and overgrown vegetation throughout channel, left bank c.2.0m, right bank c.1.8m, width c.2.0m. Water depth is c.0.2m in the channel.



Upstream Viewpoint



Downstream Viewpoint

**Photograph Sheet:** 18  
**NGR:** TF 14065 48857  
**Photograph Date:** 3 December 2024

**Description:** Location of WX18. Passing place and Catchwater Drain, with hedge and overgrown vegetation throughout channel, left bank c.1.5m, right bank c.1.5m, width c.2.0m. Water depth is c.0.3m in the channel.





Upstream Viewpoint



Downstream Viewpoint

**Photograph Sheet:** 19  
**NGR:** TF 15218 48969  
**Photograph Date:** 19 March 2024  
**Description:** Location of WX19. Passing place and unnamed drain, with hedge and overgrown vegetation throughout channel, left bank c.1.5m, right bank c.1.5m, width c.2m..



Upstream Viewpoint



Downstream Viewpoint

**Photograph Sheet:** 20  
**NGR:** TF 15408 49574  
**Photograph Date:** 19 March 2024  
**Description:** Location of WX20. Unnamed drain, with overgrown vegetation throughout channel, left bank c.1.2m, right bank c.1.2m, width c.3m. Water depth is c.0.05m in the channel.





Upstream Viewpoint

**Photograph Sheet:** 21  
**NGR:** TF 13793 48313  
**Photograph Date:** 14 July 2023  
**Description:** Location of WX21. Passing place over unnamed drain, width c.3m.



Upstream Viewpoint



Downstream Viewpoint

**Photograph Sheet:** 22  
**NGR:** TF 14481 48557  
**Photograph Date:** 14 July 2023  
**Description:** Location of WX22. Unnamed drain, with overgrown vegetation throughout channel, left bank c.1m, right bank c.1m, width c.3m. No water is present in the channel.





Upstream Viewpoint

**Photograph Sheet:** 23  
**NGR:** TF 14481 48557  
**Photograph Date:** 14 July 2023  
**Description:** Location of WX23. Unnamed drain, with hedge and overgrown vegetation throughout channel, left bank c.1.5m, right bank c.1.5m, width c.4.0m. No water is present in the channel. No water is present in the channel..



Upstream Viewpoint



Downstream Viewpoint

**Photograph Sheet:** 24  
**NGR:** TF 13989 48009  
**Photograph Date:** 19 March 2024  
**Description:** Location of WX24. Unnamed drain, with overgrown vegetation throughout the channel and banks composed of earth material. The left bank c.1.5m, right bank c.1.5m, width c. 2.5m. Water depth is c.0.1m in the channel.





Upstream Viewpoint



Downstream Viewpoint

**Photograph Sheet:** 25  
**NGR:** TF 14729 48250  
**Photograph Date:** 4 December 2024

**Description:** Location of WX25. Unnamed drain, with overgrown vegetation throughout the channel and banks composed of earth material. The left bank c.1.5m, right bank c.1.5m, width c. 1.2m. Water depth is c.0.2m in the channel and culverted downstream.



Upstream Viewpoint



Downstream Viewpoint

**Photograph Sheet:** 26  
**NGR:** TF 15704 48911  
**Photograph Date:** 19 March 2024

**Description:** Location of WX26. Unnamed drain, with banks composed of earth material. The left bank c.1.5m, right bank c.1.5m, width c. 4.0m. Water depth is c.0.4m in the channel and culverted downstream.





Upstream Viewpoint



Downstream Viewpoint

Photograph Sheet: 27  
NGR: TF 15147 48129  
Photograph Date: 3 December 2024

Description: Location of WX27. Unnamed drain, with overgrown vegetation in the channel and banks composed of earth material. The left bank c.3.0m, right bank c.3.0m, width c. 5.0m. Water depth is c.0.04m in the channel.



Upstream Viewpoint



Downstream Viewpoint

Photograph Sheet: 28  
NGR: TF 14762 47880  
Photograph Date: 3 December 2024

Description: Location of WX28. Unnamed drain, with overgrown vegetation in the channel and banks composed of earth material. The left bank c.1.2m, right bank c.1.2m, width c. 2.2m. Water depth is c.0.05m in the channel and culverted upstream.





Upstream Viewpoint



Downstream Viewpoint

**Photograph Sheet:** 29  
**NGR:** TF 14438 47630  
**Photograph Date:** 3 February 2024

**Description:** Location of WX29. Unnamed drain, with banks composed of earth material. The left bank c.1.5m, right bank c.1.5m, width c. 3.0m. Water depth is c.0.2m in the channel.



Downstream Viewpoint

**Photograph Sheet:** 30  
**NGR:** TF 14294 47454  
**Photograph Date:** 13 July 2023

**Description:** Location of WX30. Unnamed drain, connecting to Hodge Dike by the reservoir, with overgrown vegetation throughout channel, left bank c.1.5m, right bank c.1.5m, width c.3m. No water is present in the channel.



Upstream Viewpoint

**Photograph Sheet:** 31  
**NGR:** TF 14294 47454  
**Photograph Date:** 13 July 2023

**Description:** Location of WX31. Unnamed drain, with overgrown vegetation throughout channel, left bank c.1.5m, right bank c.1.5m, width c.3m. No water is present in the channel.





Upstream Viewpoint

**Photograph Sheet:** 32  
**NGR:** TF 14267 47521  
**Photograph Date:** 13 July 2023  
**Description:** Location of WX32. Unnamed drain, with overgrown vegetation throughout channel, left bank c.1.5m, right bank c.1.5m, width c.2m. No water is present in the channel.



Upstream Viewpoint



Downstream Viewpoint

**Photograph Sheet:** 33  
**NGR:** TF 13808 47438  
**Photograph Date:** 3 December 2024  
**Description:** Location of WX33. Unnamed drain, with overgrown vegetation in the channel and banks composed of earth material. The left bank c.1.5m, right bank c.1.5m, width c. 3.0m. No water is present in the channel.





Downstream Viewpoint

**Photograph Sheet:**

34

**NGR:**

TF 13906 47239

**Photograph Date:**

13 July 2023

**Description:**

Location of WX34. Unnamed drain, with overgrown vegetation throughout channel, left bank c.1.5m, right bank c.1.5m, width c.2m. No water is present in the channel.



Upstream Viewpoint

**Photograph Sheet:**

35

**NGR:**

TF 13888 47177

**Photograph Date:**

13 July 2023

**Description:**

Location of WX35. Unnamed drain, with overgrown vegetation throughout the channel, estimated bank heights of c1.5m, and width of c.2m.



Upstream Viewpoint



Downstream Viewpoint

**Photograph Sheet:**

36

**NGR:**

TF 13945 47055

**Photograph Date:**

3 December 2024

**Description:**

Location of WX36 within channel A. Channel A is an unnamed drain, with overgrown vegetation in the channel and banks composed of earth material. The left bank c.1.5m, right bank c.1.5m, width c. 1.8m. Water depth is c.0.1m in the channel. Location of WX37 within channel B. Channel B is an unnamed drain, with overgrown vegetation in the channel and banks composed of earth material. The left bank c.1.2m, right bank c.1.2m, width c. 1.3m. Water depth is c.0.08m in the channel.





Upstream Viewpoint



Downstream Viewpoint

**Photograph Sheet:** 37  
**NGR:** TF 14364 47311  
**Photograph Date:** 3 December 2024

**Description:** Location of WX38. Unnamed drain, with overgrown vegetation in the channel and banks composed of earth material. The left bank c.2.5m, right bank c.2.5m, width c. 5.0m. Water depth is c.0.3m in the channel.



Upstream Viewpoint



Downstream Viewpoint

**Photograph Sheet:** 38  
**NGR:** TF 14554 47441  
**Photograph Date:** 3 December 2024

**Description:** Location of WX39. Unnamed drain, with overgrown vegetation in the channel and banks composed of earth material. The left bank c.1.3m, right bank c.1.3m, width c. 2.4m. Water depth is c.0.01m in the channel.





Upstream Viewpoint



Downstream Viewpoint

**Photograph Sheet:** 39  
**NGR:** TF 15382 47989  
**Photograph Date:** 3 December 2024  
**Description:** Location of WX41. Unnamed drain, with banks composed of earth material. The left bank c.1.8m, right bank c.1.8m, width c. 3.5m. Water depth is c.0.4m in the channel.



Upstream Viewpoint

**Photograph Sheet:** 40  
**NGR:** TF 14528 47399  
**Photograph Date:** 13 July 2023  
**Description:** Location of WX40. Hodge Dyke, with overgrown vegetation throughout bank, left bank c.2m, right bank c.2m, width c.5m, depth c.0.3m





Upstream Viewpoint



Downstream Viewpoint

**Photograph Sheet:** 41  
**NGR:** TF 13827 46648  
**Photograph Date:** 3 December 2024

**Description:** Location of WX42. Unnamed drain, with overgrown vegetation in channel and banks composed of earth material. The left bank c.1.4m, right bank c.1.4m, width c. 2.5m. Water depth is c.0.2m in the channel.



Downstream Viewpoint

**Photograph Sheet:** 42  
**NGR:** TF 14317 47190  
**Photograph Date:** 13 July 2023

**Description:** Location of WX43. Unnamed drain, with overgrown vegetation throughout channel, left bank c.1.5m, right bank c.1.5m, width c.2m. No water is present in the channel.





Upstream Viewpoint



Downstream Viewpoint

**Photograph Sheet:** 43  
**NGR:** TF 15251 47562  
**Photograph Date:** 3 December 2024

**Description:** Location of WX44. Unnamed drain, with overgrown vegetation in channel and banks composed of earth material. The left bank c.0.4m, right bank c.0.4m, width c. 0.5m. No water present in channel.



Upstream Viewpoint



Downstream Viewpoint

**Photograph Sheet:** 44  
**NGR:** TF 15525 48004  
**Photograph Date:** 19 March 2024

**Description:** Location of WX45. Unnamed drain, with overgrown vegetation in channel and banks composed of earth material. The left bank c.2.0m, right bank c.2.0m, width c. 3.0m. Water depth is c.0.1m in the channel.





Upstream Viewpoint



Downstream Viewpoint

**Photograph Sheet:** 45  
**NGR:** TF 15015 46992  
**Photograph Date:** 19 March 2024

**Description:** Location of WX46. Unnamed drain, with hedgerow along bank and banks composed of earth material. The left bank c.1.0m, right bank c.1.0m, width c. 0.8m. No water present in channel.



Upstream Viewpoint



Downstream Viewpoint

**Photograph Sheet:** 46  
**NGR:** TF 15022 46977  
**Photograph Date:** 19 March 2024

**Description:** Location of WX47. Unnamed drain, with hedgerow along bank and banks composed of earth material. The left bank c.0.8m, right bank c.0.5m, width c. 0.8m. Water Depth is c. 0.1m in channel with a silty substrate.





Upstream Viewpoint



Downstream Viewpoint

**Photograph Sheet:** 47  
**NGR:** TF 15425 46490  
**Photograph Date:** 19 March 2024  
**Description:** Location of WX48. Unnamed drain, with banks composed of earth material. The left bank c.0.8m, right bank c.0.8m, width c. 1.2m. Water Depth is c. 0.2m in channel with a silty substrate.



Upstream Viewpoint



Downstream Viewpoint

**Photograph Sheet:** 48  
**NGR:** TF 15975 45286  
**Photograph Date:** 19 March 2024  
**Description:** Location of WX50. Unnamed drain, with banks composed of earth material. The left bank c.0.8m, right bank c.0.8m, width c. 1.2m. Water Depth is c. 0.2m in channel with a silty substrate.





Upstream Viewpoint

Photograph Sheet:

49

NGR:

TF 15988 45273

Photograph Date:

19 March 2024

Description:

Location of WX49. Unnamed drain, with banks composed of earth material. The left bank c.1.3m, right bank c.0.4m, width c. 0.2m. No water present in the channel.



Upstream Viewpoint



Downstream Viewpoint

Photograph Sheet:

50

NGR:

TF 16051 44943

Photograph Date:

19 March 2024

Description:

Location of WX52. Unnamed drain, with banks composed of earth material. The left bank c.1.5m, right bank c. 1.5m, width c. 3.0m. Water Depth is c. 0.25m in channel with a silty substrate.





Upstream Viewpoint



Downstream Viewpoint

**Photograph Sheet:** 51  
**NGR:** TF 16189 44770  
**Photograph Date:** 19 March 2024

**Description:** Location of WX53. Unnamed drain, with overgrown vegetation throughout channel and banks composed of earth material. The left bank c.1.5m, right bank c. 1.5m, width c. 2.0m. Water Depth is c. 0.05m in channel with a silty substrate.



Upstream Viewpoint



Downstream Viewpoint

**Photograph Sheet:** 52  
**NGR:** TF 16442 44783  
**Photograph Date:** 3 December 2024

**Description:** Location of WX54. Unnamed drain, with overgrown vegetation throughout channel and banks composed of earth material. The left bank c.1.0m, right bank c. 1.0m, width c. 1.5m. Water Depth is c. 0.02m in channel with a silty substrate.





Upstream Viewpoint



Downstream Viewpoint

**Photograph Sheet:** 53  
**NGR:** TF 16736 44634  
**Photograph Date:** 19 March 2024

**Description:** Location of WX55. Unnamed drain, with overgrown vegetation throughout channel and banks composed of earth material. The left bank c.1.4m, right bank c. 1.4m, width c. 3.0m. Water Depth is c. 0.2m in channel with a silty substrate.



Upstream Viewpoint



Downstream Viewpoint

**Photograph Sheet:** 54  
**NGR:** TF 16798 44032  
**Photograph Date:** 3 December 2024

**Description:** Location of WX56. Unnamed drain, with overgrown vegetation throughout channel and banks composed of earth material. The left bank c.0.8m, right bank c. 1.4m, width c. 2.0m. No water present in channel.





Upstream Viewpoint



Downstream Viewpoint

**Photograph Sheet:** 55  
**NGR:** TF 16865 43999  
**Photograph Date:** 3 December 2024

**Description:** Watercourse crossing location WX57 taken from downstream of point due to accessibility issue. Unnamed drain, with banks composed of earth material. The left bank c.1.2m, right bank c. 1.2m, width c. 2.0m. No water present in channel.



Upstream Viewpoint



Downstream Viewpoint

**Photograph Sheet:** 56  
**NGR:** TF 16720 43221  
**Photograph Date:** 19 March 2024

**Description:** Location of WX58. Unnamed drain, with banks composed of earth material. The left bank c.1.5m, right bank c. 1.5m, width c. 2.5m. The water depth is c. 0.7m.





Upstream Viewpoint



Downstream Viewpoint

**Photograph Sheet:** 57  
**NGR:** TF 16728 43195  
**Photograph Date:** 19 March 2024  
**Description:** Location of WX59. Unnamed drain, with banks composed of earth material. The left bank c.1.5m, right bank c. 1.5m, width c. 1.5m. The water depth is c0.3m and is culverted downstream.



Upstream Viewpoint



Downstream Viewpoint

**Photograph Sheet:** 58  
**NGR:** TF 16870 42888  
**Photograph Date:** 3 December 2024  
**Description:** Location of WX60. Unnamed drain, with banks composed of silt and earth material. The left bank c.2.0m, right bank c. 2.0m, width c3.0m. The water depth is c0.4m and is culverted downstream.





Upstream Viewpoint



Downstream Viewpoint

Photograph Sheet: 59  
NGR: TF 17103 42850  
Photograph Date: 3 December 2024

Description: Location of WX61. Unnamed drain, with banks composed of silt and earth material. The left bank c.1.5m, right bank c. 1.5m, width c3.0m. The water depth is c0.05m and is culverted downstream.



Upstream Viewpoint



Downstream Viewpoint

Photograph Sheet: 60  
NGR: TF 18234 42499  
Photograph Date: 3 December 2024

Description: Location of WX62. Unnamed drain, with banks composed of silt and earth material. The left bank c.2.0m, right bank c. 2.0m, width c3.0m. The water depth is c0.06m.





Upstream Viewpoint

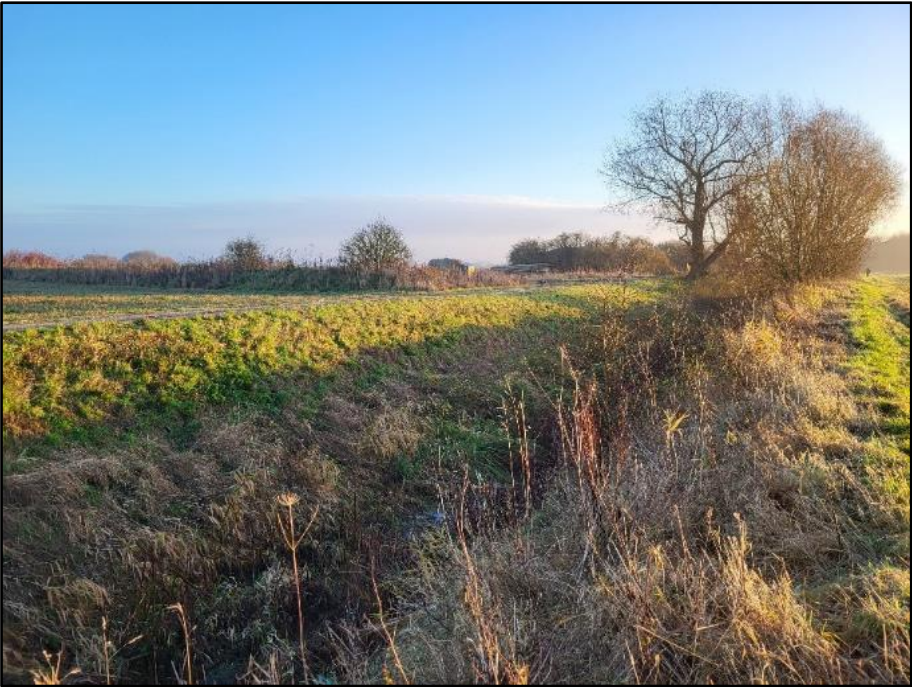


Downstream Viewpoint

**Photograph Sheet:** 61  
**NGR:** TF 18811 42390  
**Photograph Date:** 21 March 2024  
**Description:** Location of WX63. Great Hale Eau, with banks composed of silt and earth material. The left bank c.3.0m, right bank c.3.0m, width c6.0m. The water depth is c1.2m.



Upstream Viewpoint



Downstream Viewpoint

**Photograph Sheet:** 62  
**NGR:** TF 19449 42105  
**Photograph Date:** 3 December 2024  
**Description:** Location of WX64. Unnamed drain, with banks composed of silt and earth material. The left bank c.3.0m, right bank c.3.0m, width c4.5m. The water depth is c0.2m.





Upstream Viewpoint



Downstream Viewpoint

**Photograph Sheet:** 63  
**NGR:** TF 19634 41927  
**Photograph Date:** 3 December 2024  
**Description:** Location of WX65. Unnamed drain, with banks composed of silt and earth material. The left bank c.1.5m, right bank c.1.5m, width c2.0m. The water depth is c0.1m.



Upstream Viewpoint



Upstream Viewpoint

**Photograph Sheet:** 64  
**NGR:** TF 19827 41738  
**Photograph Date:** 3 December 2024  
**Description:** Location of WX66. South Forty Foot Drain, with banks composed of silt and earth material. The left bank is c.6.0m, right bank c.6.0m, width c10.0m.





Upstream Viewpoint



Downstream Viewpoint

Photograph Sheet: 65  
NGR: TF 20359 40736  
Photograph Date: 3 December 2024

Description: Location of WX67. Unnamed drain, with banks composed of silt and earth material. The left bank c.1.3m, right bank c.1.3m, width c3.0m. No water is present in the channel.



Upstream Viewpoint



Downstream Viewpoint

Photograph Sheet: 66  
NGR: TF 20528 40395  
Photograph Date: 3 December 2024

Description: Location of WX68. Unnamed drain, with banks composed of silt and earth material. The left bank c.2.0m, right bank c.2.0m, width c3.5m. Water depth of c.0.2m in the channel.





Upstream Viewpoint



Downstream Viewpoint

**Photograph Sheet:** 67  
**NGR:** TF 20537 39774  
**Photograph Date:** 19 March 2024  
**Description:** Location of WX69. Unnamed drain, with banks composed of silt and earth material. The left bank c.2.0m, right bank c.2.0m, width c3.0m. Water depth of c.0.1m in the channel.



Upstream Viewpoint



Downstream Viewpoint

**Photograph Sheet:** 68  
**NGR:** TF 20364 39432  
**Photograph Date:** 19 March 2024  
**Description:** Location of WX70. Unnamed drain, with banks composed of silt and earth material. The left bank c.2.0m, right bank c.2.0m, width c2.5m. Water depth of c.0.3m in the channel.





Upstream Viewpoint



Downstream Viewpoint

Photograph Sheet: 69  
NGR: TF 20178 39059  
Photograph Date: 19 March 2024

Description: Location of WX71. Unnamed drain, with banks composed of silt and earth material. The left bank c.3.0m, right bank c.2.5m, width c.7.0m. Water depth of c.0.5m in the channel.



Upstream Viewpoint



Downstream Viewpoint

Photograph Sheet: 70  
NGR: TF 20170 38941  
Photograph Date: 3 December 2024

Description: Location of WX72. Unnamed drain, with banks composed of earth material and a silty and earth channel substrate. The left bank c.1.2m, right bank c.1.3m, width c.2.0m. Water depth of c.0.08m in the channel and culverted.





Upstream Viewpoint



Downstream Viewpoint

Photograph Sheet: 71  
NGR: TF 20163 38922  
Photograph Date: 3 December 2024

Description: Location of WX73. Unnamed drain, with banks composed of earth material. The left bank c.1.0m, right bank c.1.0m, width c.2.0m. Water depth of c.0.2m in the channel.



Upstream Viewpoint



Downstream Viewpoint

Photograph Sheet: 72  
NGR: TF 20063 38834  
Photograph Date: 3 December 2024

Description: Location of WX74. Unnamed drain, with vegetation throughout the channel and banks composed of earth material. The left bank c.1.0m, right bank c.1.0m, width c.1.5m. No water present in channel.





Upstream Viewpoint



Downstream Viewpoint

Photograph Sheet: 73  
NGR: TF 19876 38586  
Photograph Date: 3 December 2024

Description: Location of WX75. Unnamed drain, with vegetation throughout the channel and banks composed of earth material. The left bank c.1.5m, right bank c.1.5m, width c.1.5m. Water depth of c.0.02m in the channel.



Upstream Viewpoint



Downstream Viewpoint

Photograph Sheet: 74  
NGR: TF 19826 38469  
Photograph Date: 3 December 2024

Description: Location of WX76. Unnamed drain, with overgrown vegetation throughout the channel. The left bank c.0.6m, right bank c.0.6m, width c.1.0m. No water present in channel.





Upstream Viewpoint



Downstream Viewpoint

**Photograph Sheet:** 75  
**NGR:** TF 19786 38366  
**Photograph Date:** 3 December 2024

**Description:** Location of WX77. Unnamed drain, with banks composed of earth material and channel substrate not visible earth and silt. The left bank c.0.9m, right bank c.0.8m, width c.2.0m. Water depth is approximately c.0.4m with no perceivable flow.



Upstream Viewpoint



Downstream Viewpoint

**Photograph Sheet:** 76  
**NGR:** TF 19754 38340  
**Photograph Date:** 3 December 2024

**Description:** Location of WX78. Unnamed drain, with banks composed of earth material and earth and silt substrate in the channel. The left bank c.1.2m, right bank c.1.2m, width c.3.0m. Water depth is approximately c.0.3m with no perceivable flow.





Upstream Viewpoint



Downstream Viewpoint

**Photograph Sheet:** 77  
**NGR:** TF 19740 38340  
**Photograph Date:** 3 December 2024  
**Description:** Location of WX79. Unable to access watercourse due to fencing.